

Trichogramma chilonis Ishii: A potential biological control agent of *Crocidolomia pavonana* in Samoa

Gurion Ang, Aleni Uelese, Pati Niko, Myron Zalucki & Mike Furlong



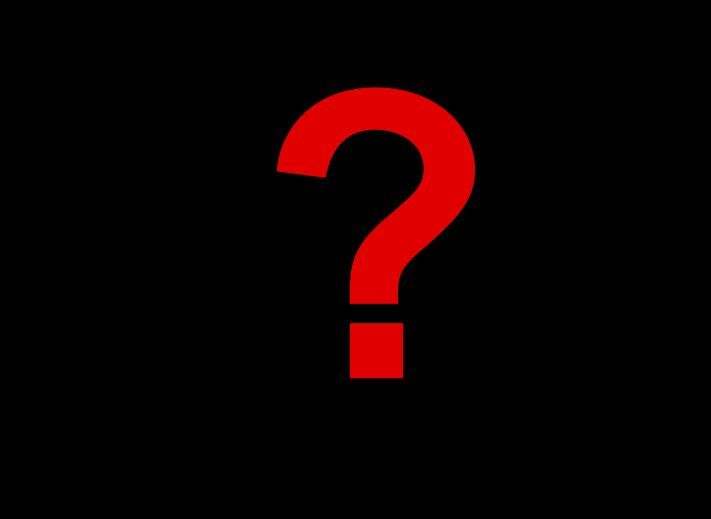
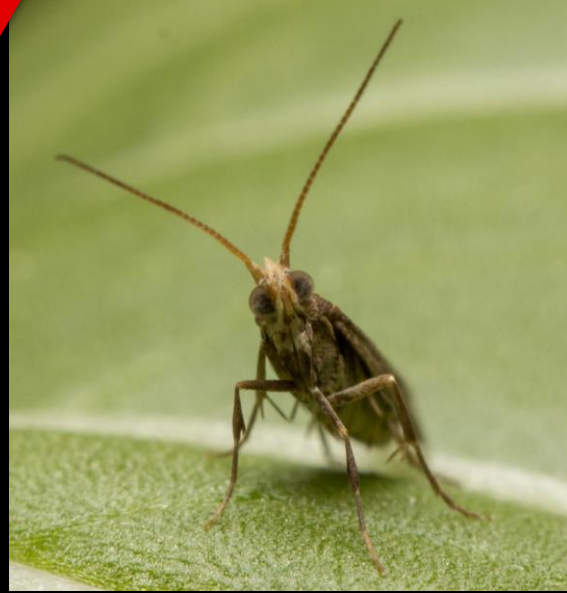
THE UNIVERSITY
OF QUEENSLAND
AUSTRALIA































Contents lists available at [ScienceDirect](#)

Biological Control

journal homepage: www.elsevier.com/locate/ybcon



Trichogramma chilonis Ishii: A potential biological control agent of *Crocidolomia pavonana* in Samoa

Aleni Uelese^a, Peter M. Ridland^b, Richard Stouthamer^c, Yu-rong He^d, Gurion Ang^e, Myron P. Zalucki^e, Michael J. Furlong^{e,*}

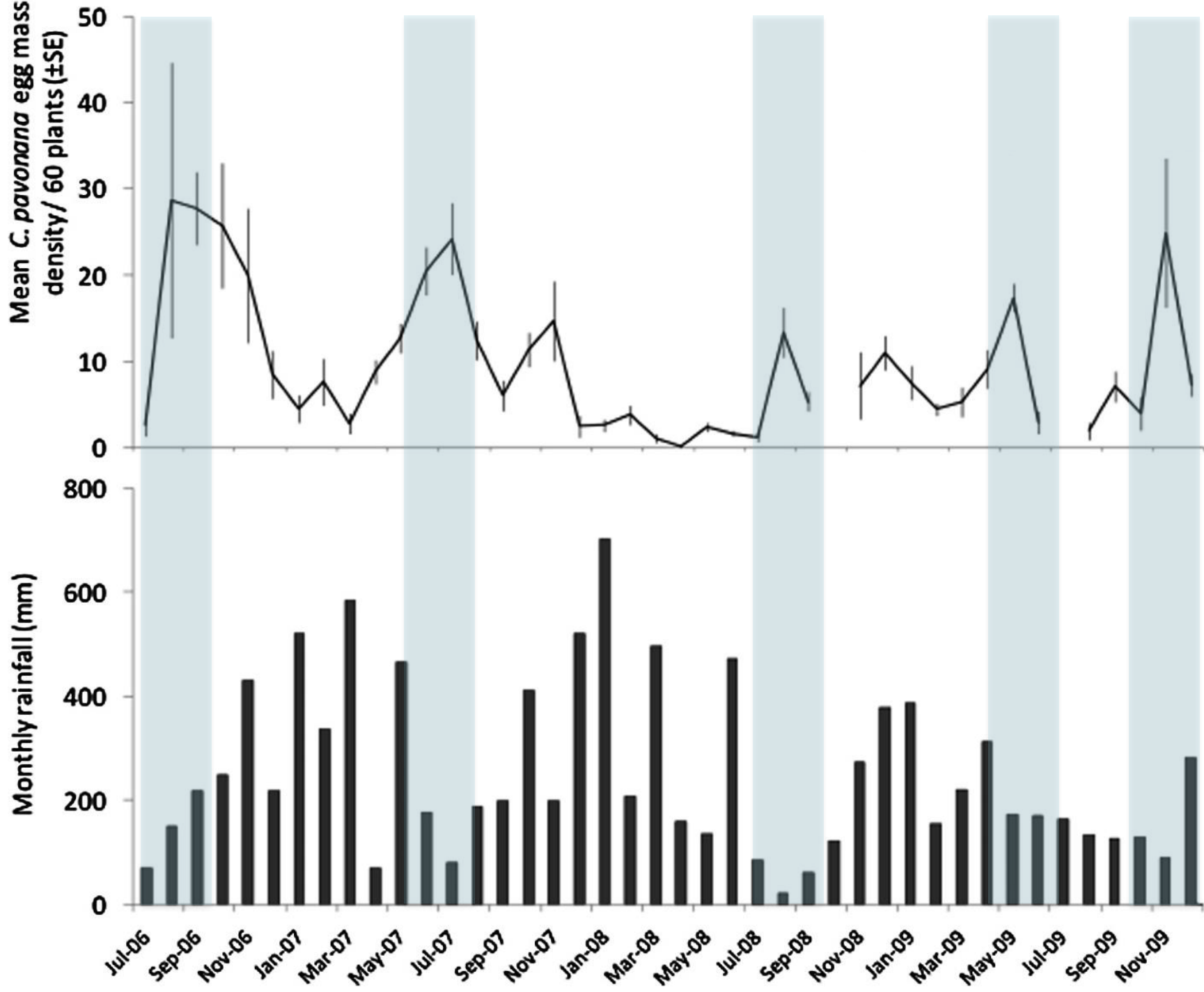
^a Crops Division, Ministry of Agriculture and Fisheries, Nu'u Research Centre, Nu'u, Samoa

^b 44 Gladstone Avenue, Northcote, Victoria 3070, Australia

^c Department of Entomology, University of California Riverside, CA 92521, USA

^d Department of Entomology, College of Natural Resources and Environment, South China Agricultural University, Wushan St., Tianhe District, Guangzhou 510642, China

^e School of Biological Sciences, The University of Queensland, St Lucia, Queensland 4072, Australia



- Rate of egg disappearance: 0 – 0.839
- Mortality due to parasitism: 0 – 0.474

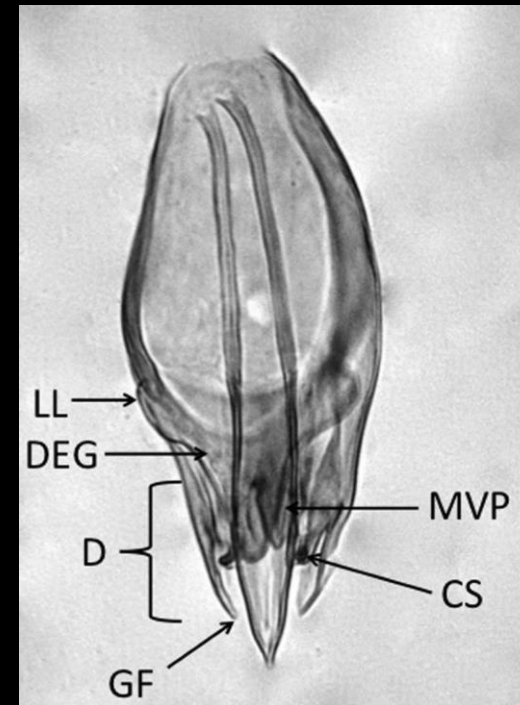
- Rate of egg disappearance: 0 – 0.839
- Mortality due to parasitism: 0 – 0.474
- Sex ratio: 6:1



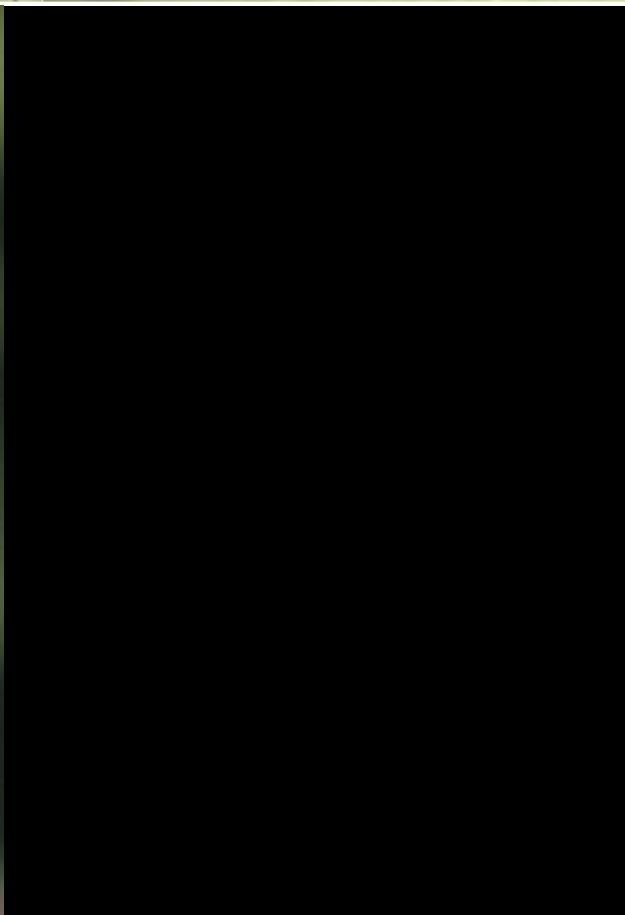
- *Trichogramma chilonis*
- *Trichogramma australicum*
- *Trichogramma confusum*

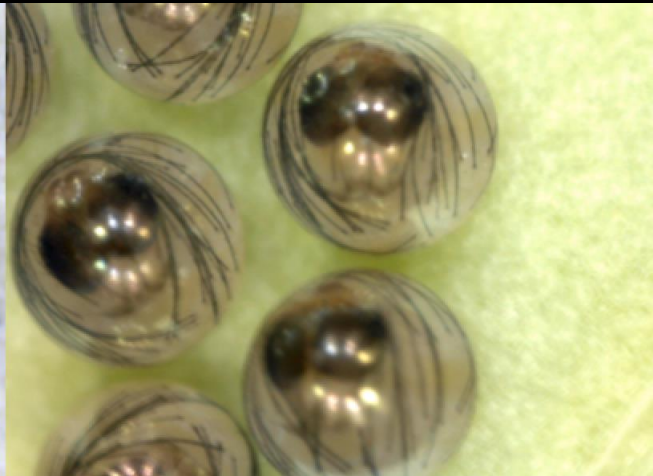


- *Trichogramma chelonis*





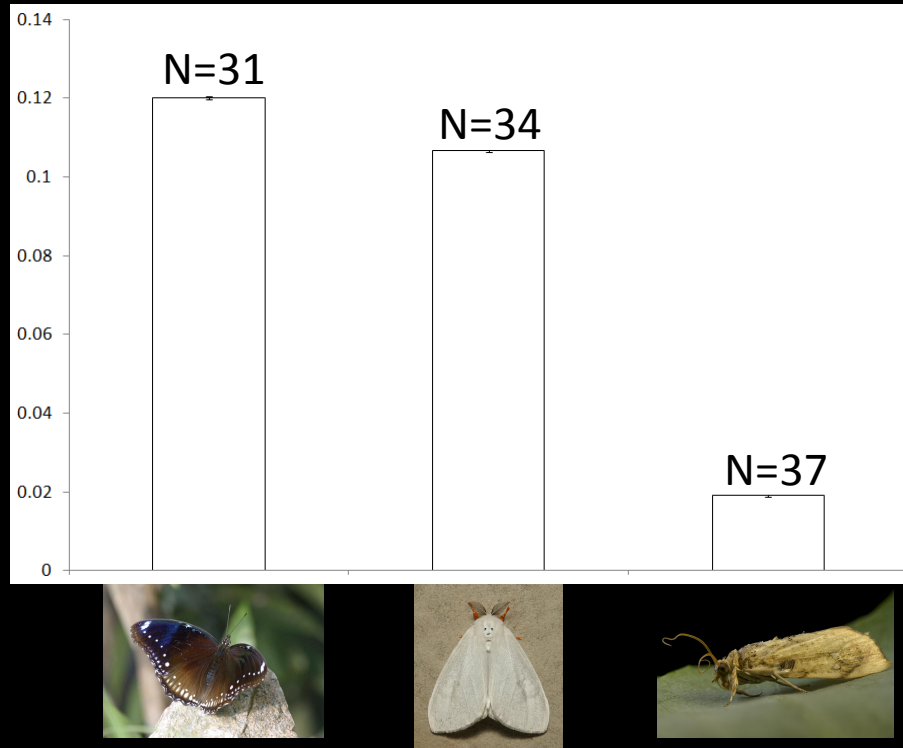






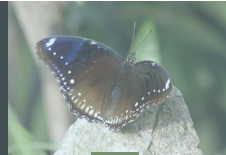
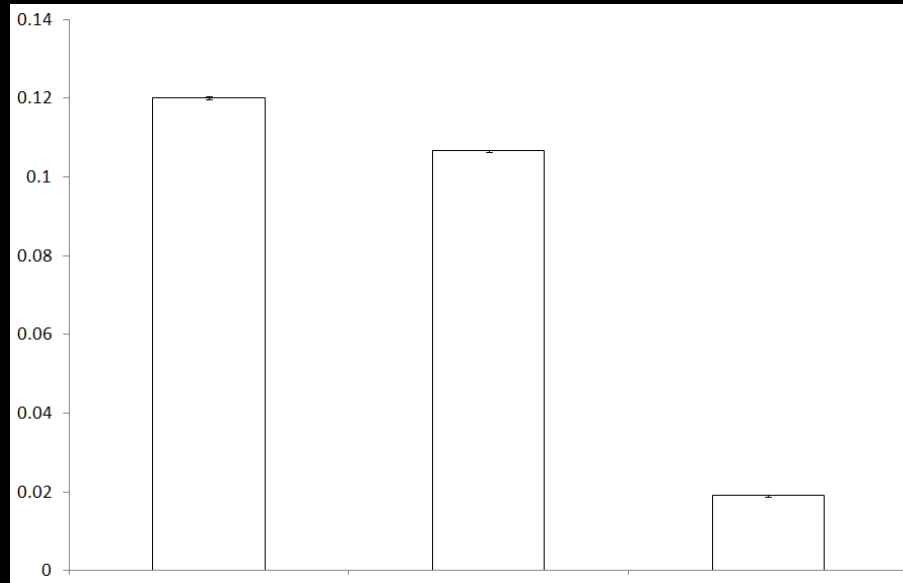
Egg Volume

Volume
(mm³)



Egg Volume + Sex Ratios

Volume
(mm³)



1:1

~8
wasps/egg



1:1

~11
wasps/egg



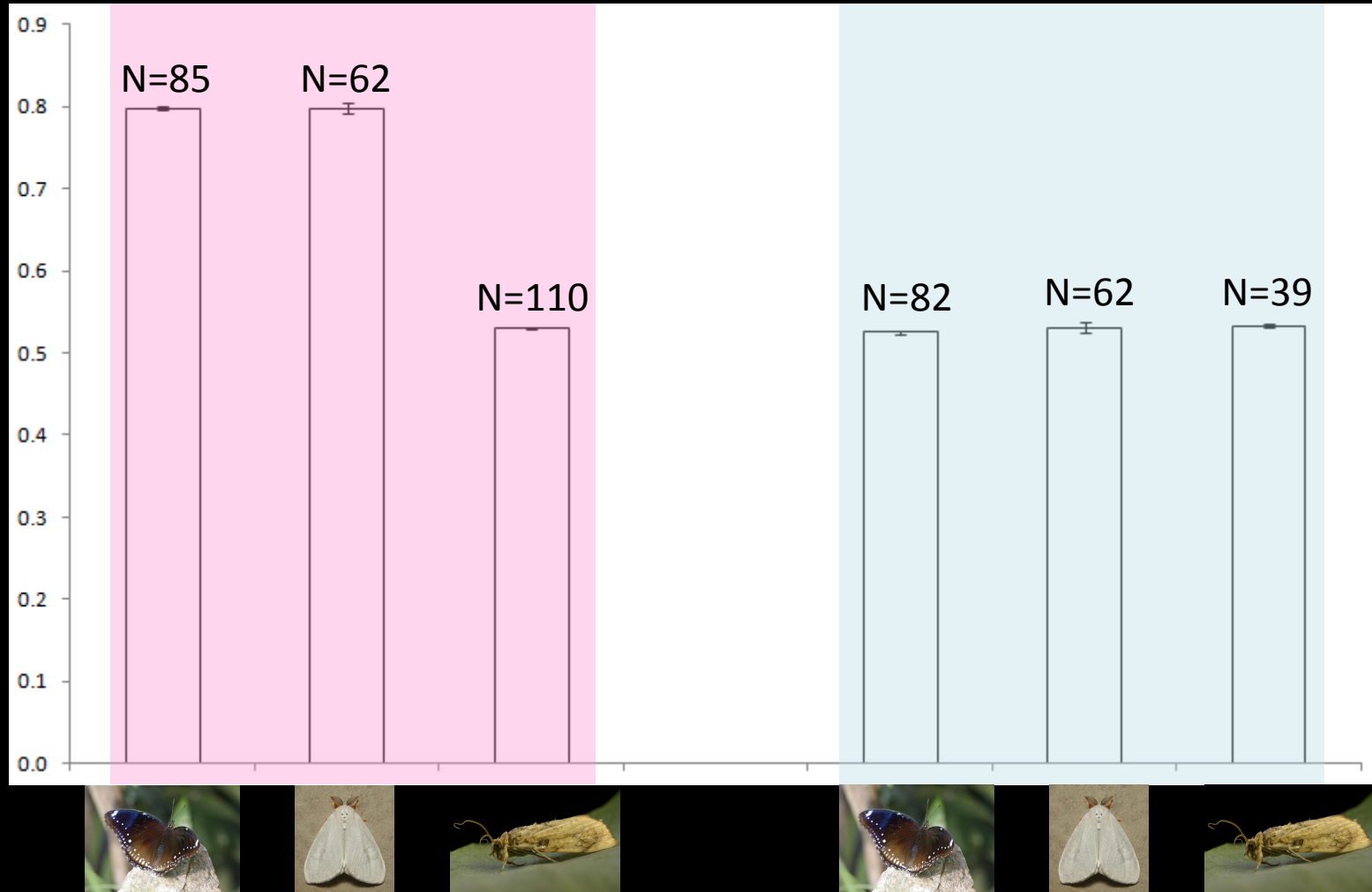
6:1

1 wasp/egg
>20 eggs/clutch

larger females

Body Size

Length
(mm)



Tradeoff?



- Smaller females
- More females 6:1



- Larger females
- Fewer females 1:1

Current Studies

